

Chaffee Recreation in Balance
Colorado Mountain Club Recreation Impact Monitoring System (CMC RIMS)
End of Season Report
December 2019

Summary

As part of the Chaffee Envision Recreation in Balance (RiB) project, the Colorado Mountain Club (CMC) provided support for public lands monitoring and inventory work using the new CMC RIMS mobile application. CMC developed the app in partnership with RiB stakeholders and land managers to collect data on trail maintenance needs, dispersed campsites, signs and facilities, and visitor activity. The app collects geo-located data, detailed survey information, photos and notes which are then synchronized in a cloud database. App users are required to complete a training prior to using the monitoring components of the program to ensure data quality and consistency. The following report details user activities from the app launch in July 2019 through November 2019.

Users

CMC hosted **five in-person trainings** in Chaffee County to engage RiB volunteers in data collection efforts. Additionally, two webinar training sessions were available for participants to attend.

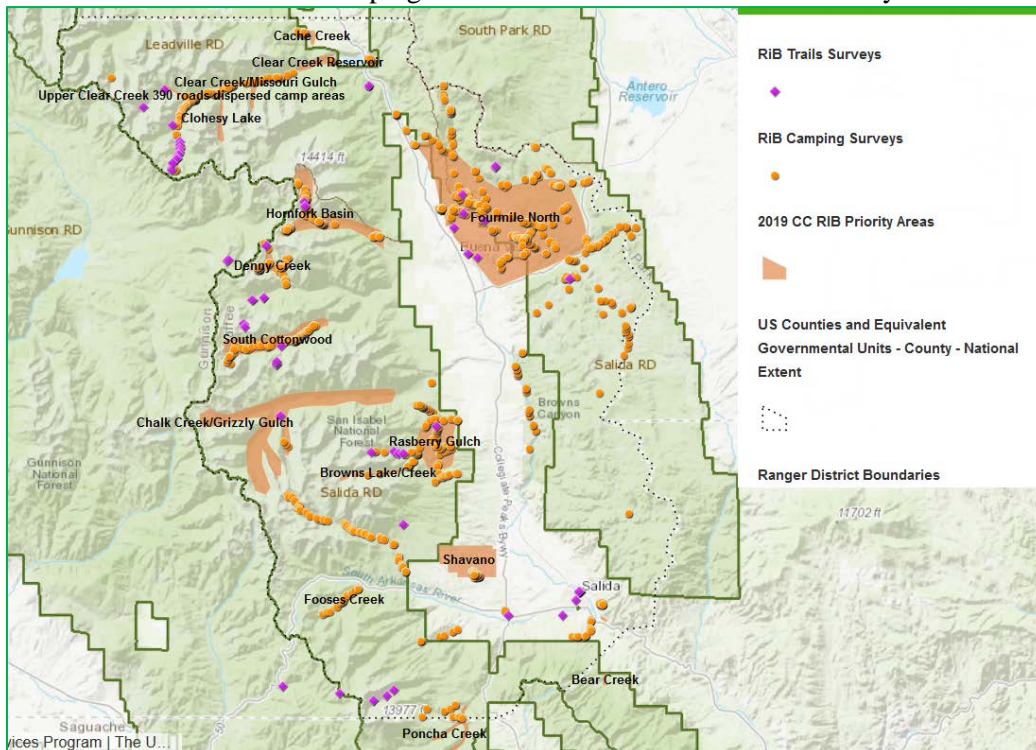
- July 20, 2019 – Poncha Springs
- July 24, 2019 – Buena Vista
- July 25, 2019 – Poncha Springs
- August 10, 2019 – Buena Vista
- August 13, 2019 – Poncha Springs
- September 3, 2019 – Webinar
- October 7, 2019 – Webinar

In total, 88 volunteers attended the in-person trainings and 13 attended the webinars for **101 total RiB participants trained**.

Data

RIMS app data was filtered by geographic coordinates to show Chaffee County only and the metrics below were calculated from the most recent export on November 18, 2019. Raw data was also shared with Forest Service GIS staff for additional mapping analysis (not included in this report).

Locations of Camping & Trail Assessments in Chaffee County

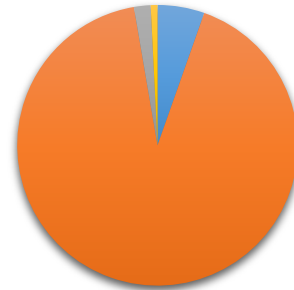


Chaffee Recreation in Balance
Colorado Mountain Club Recreation Impact Monitoring System (CMC RIMS)
End of Season Report
 December 2019

Total Assessments: 1147

- Camping – 1054
- Trail – 62
- Signs & Facilities – 22
- Visitor Activity – 9

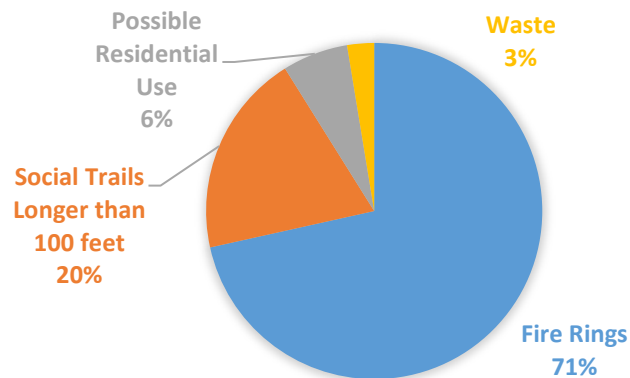
- Trail Assessments
- Camping Assessments
- Signs & Facilities Assessments
- Visitor Activity



Camping Assessment Summary

- 1054 sites assessed
- 642 Issues identified
- Average Impact Rating: 4.2 out of 8
- **Total disturbed area: 132 acres** (5,751,670 square feet) = about 100 football fields
- 1157 Rock Fire Rings + 296 Ash Piles
- **User-created routes to/from campsites: 14+ miles** (74,806 linear feet)
- Possible residential use noted at 39 sites with 10 instances of school-aged children present during school hours

Camping Issues by Type



Visitor Activity
9 Assessments

